

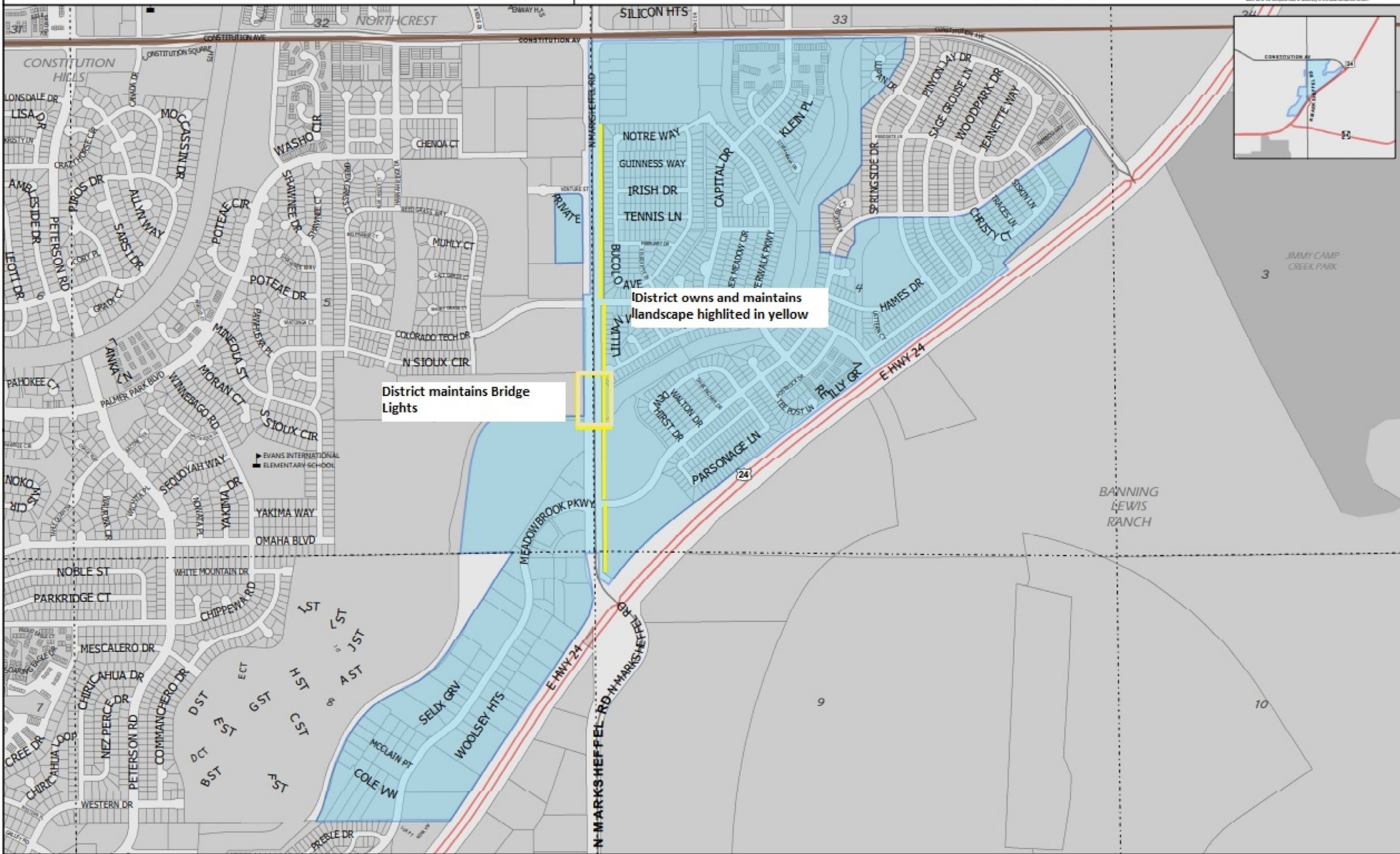
CENTRAL MARKSHEFFEL MD

 Tax Boundary

1 inch = 869.19 feet

06/19/2022 EPC Assessor's Office
MAD_1983_StatePlane_Colorado_Central_FPS_0502_Feet
Projection: Lambert_Conformal_Conic

COPYRIGHT 2018 by the Board of County Commissioners, El Paso County, Colorado. All rights reserved. No part of this document or data contained herein may be reproduced, stored in a retrieval system, or transmitted in any form or by any means, electronic, mechanical, photocopying, recording, or by any information storage and retrieval system, without the prior written approval of the Board of County Commissioners, El Paso County, Colorado. This document was prepared from the best available data at the time of printing and is for general advisory purposes only. El Paso County, Colorado, makes no claim as to the absolute truth or accuracy of the data contained herein.



District owns and maintains landscape highlighted in yellow

District maintains Bridge Lights